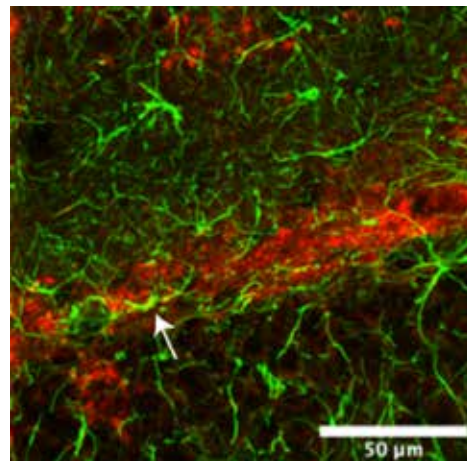


Results from CombiGene's cell tropism study confirm that CG01 only reaches the nerve cells in the hippocampus

CombiGene has recently successfully completed a so-called cell tropism study with the company's gene therapy CG01, which is being developed for the treatment of drug resistant focal epilepsy. CG01 is intended to reach the nerve cells in the hippocampus, that is, the cells that triggers the epileptic seizures. The now finished tropism study shows that CG01 works just like intended: it is taken up by the nerve cells of the hippocampus, but not in the supporting cells, the so-called glial cells.

The results from the study are very encouraging as they further confirm that CG01 reaches the brain cells as intended. The knowledge from the tropism study provides additional understanding of how CG01 works and provides answers to questions about the drug candidate's tropism as asked for by the regulatory authorities.



The figure shows a part of the hippocampus where NPY (stained in red) is not found in the supporting cells (green).

About CombiGene AB

CombiGene's vision is to provide patients affected by severe life-altering diseases with the prospect of a better life through novel gene therapies. CombiGene's business concept is to develop effective gene therapies for severe life-altering diseases where adequate treatment is currently lacking. Development assets are sourced from an external research network and developed to achieve clinical proof of concept. Drug candidates for common diseases will be co-developed and commercialized through strategic partnerships, while the company may manage this process on its own for drugs targeting niched patient populations.

The company is public and listed on the Swedish marketplace Nasdaq First North Growth Market and the company's Certified Advisor is FNCA Sweden AB, +46 (0)852 80 0399, info@fnca.se.

For further information:

CombiGene AB (publ)
Jan Nilsson, CEO
Tel: +46 (0)704 66 31 63
jan.nilsson@combigene.com

Bert Junno, Chairman of the board
Tel: +46(0) 70 777 22 09
bert.junno@combigene.com

Please read MORE FROM THE COMPANY, a newsletter from CombiGene which contains general news and information that is judged not to have a significant effect on the share price. Other issues of MORE FROM THE COMPANY and press releases are available at www.combigene.com

