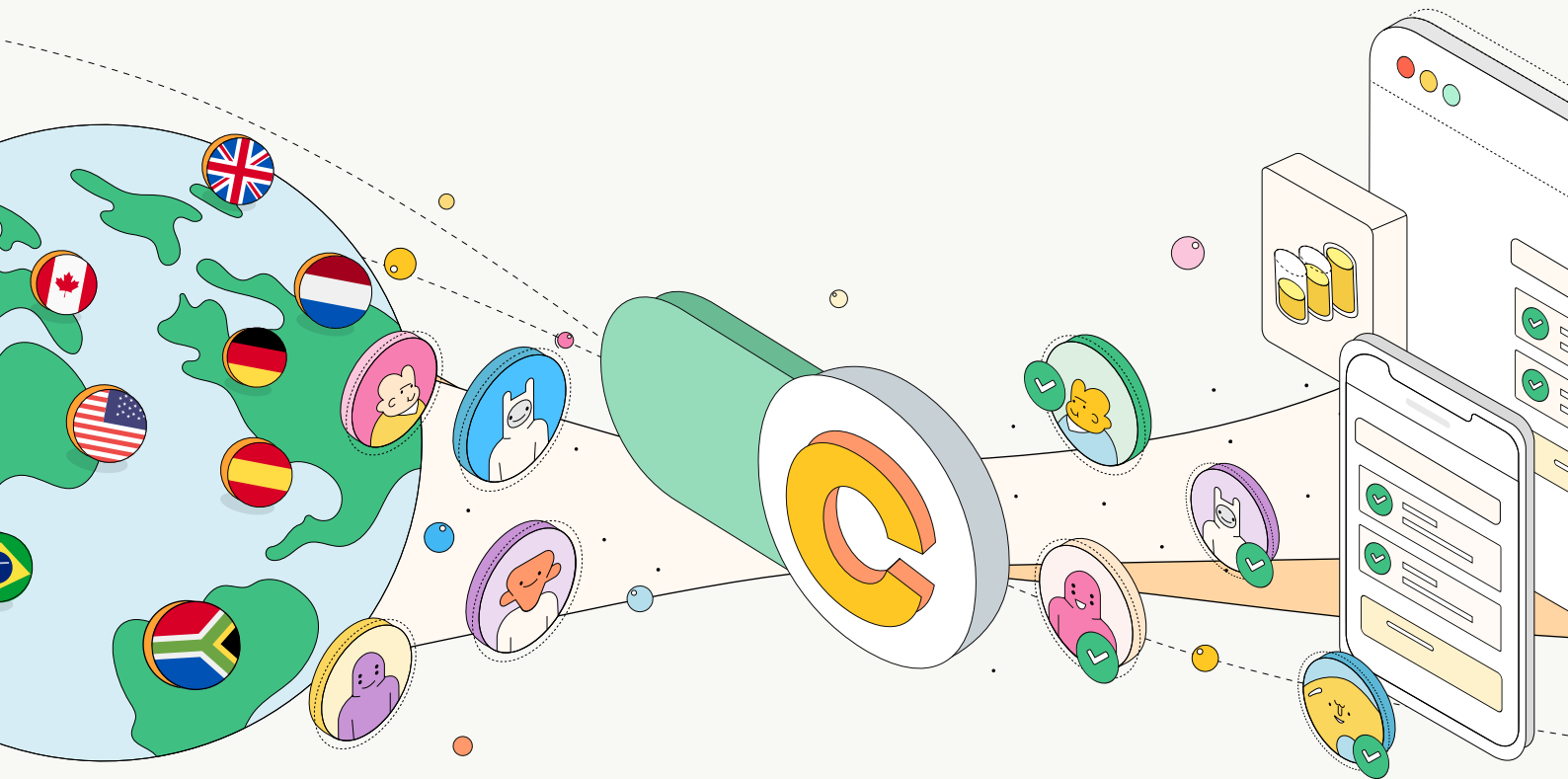


Checkin.com Group AB

Interim report

January - March 2026



Report in brief

January - March 2026
(Compared to previous year)

Net revenue decreased to KSEK 14,374 (18,826), which corresponds to a growth of -24 (-12)% compared to the same period 2025. At constant currencies the growth was -20 (-10)%. Compared to the fourth quarter of 2025 Net revenue growth amounted to -7 (10)%.

Gross profit for the period amounted to KSEK 10,611 (13,175) with a margin of 74 (70)%.

EBITDA for the period amounted to KSEK 4,141 (2,316) with a margin of 29 (12)%.

Cash flow from operating activities amounted to KSEK 7,475 (4,145).

Net Revenue Retention LTM amounted to 74 (82)%.

Cash and cash equivalents amounted to KSEK 15,383 (24,461).

CEO letter

It is with a blend of humility and firm conviction that I write my first CEO's Letter to you—shareholders, customers, partners, and colleagues. I took on the role of CEO for Checkin.com Group a few weeks ago, and yet I already feel what made me accept this mission: a company with genuinely valuable core competence, a team with deep domain knowledge, and a fast-growing market. This is a good starting point. But I also want to be honest: there is work to be done, and we are going to do it.

2025 was a year that confirmed that change is necessary. That change is already in motion.

What Checkin.com is—and Why it Matters

Checkin.com is a B2B SaaS company that solves one of the most regulatory complex problems in digital onboarding: verifying who a person actually is, in real-time, in accordance with shifting jurisdictional requirements, without destroying the user experience. It's difficult to do well. We do it well. That capability is the core of what we are—and it is intact.

The European market for regulatory identity verification continues to grow, driven by tightened licensing requirements and operators' increasing need to consolidate their compliance infrastructure. This is a structural tailwind. Our task is to ensure we are correctly positioned to benefit from it.

What I Have Learned—and What We Prioritize

Since I took office, I have spent the first few weeks listening—to the team, to customers, and to the numbers. What has become clearest is not that we need to do more things. It is that we need to do fewer things better. Focus is as much about what we choose as what we choose not to do—and that discipline will permeate how we make decisions going forward.

We will build a product portfolio that matches the market's actual requirements. I am clear that we cannot — and should not — try to cover everything. It is about identifying where we create the greatest value and going deeper there, rather than spreading ourselves too thin.

The commercial machinery needs to be built up. That is the honest picture, and it is not a quick fix. It is a job delivered through accumulated decisions and tactical adjustments, quarter after quarter. It requires patience — and it requires the right people in place. Therefore, one of the first concrete steps we are taking is to strengthen the commercial team. This is an investment in the company's ability to grow sustainably.



To You Who Are Shareholders

You deserve leadership that is transparent about what is required and disciplined in how it is delivered. That is what you will get. I do not intend to give you quarterly optimism without substance behind it. What I can give you is a clear commitment: we will build a company with stronger commercial discipline, a more focused offering, and a growth strategy based on the reality of the market we operate in — not on hopes.

To You Who Are Customers and Partners

Checkin.com's strength has always been in the combination of technical capability and deep compliance understanding. That strength is intact. What you can expect going forward is a company that is even clearer about what we commit to, more responsive to what you actually need, and more focused on delivery.

To You in the Team

You have navigated a tough year with professionalism and commitment. I see that, and I respect it. Going forward, you will have a leadership that is clear in its direction, quick to make decisions, and consistent in its priorities. That is what you deserve, and that is what we will build together.

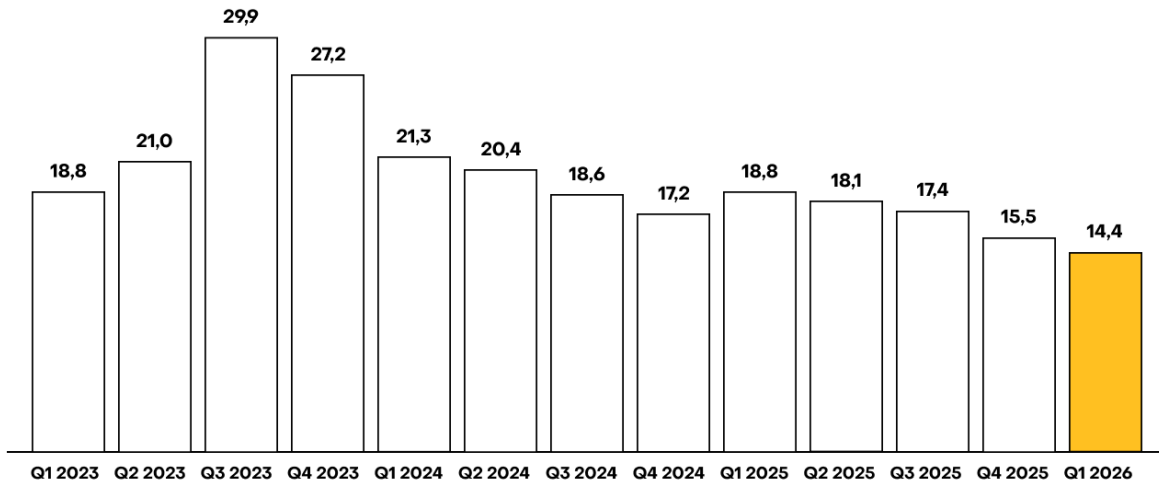
Turnarounds in companies like this do not happen over a single quarter. They are built through accumulated decisions, consistent execution, and patience. That work is already underway. What you can hold me accountable for is not a dramatic change tomorrow — but a clear and consistent direction over time. That direction is being staked out now — and the first decisions have already been made.

Arif Rehman, CEO
Stockholm, May 6, 2026

Summary of the period

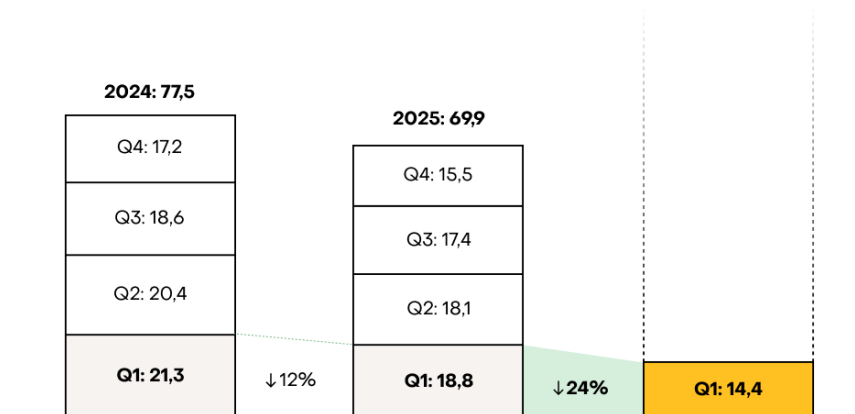
Quarterly Net Revenue

(MSEK)



Net Revenue per year and quarter

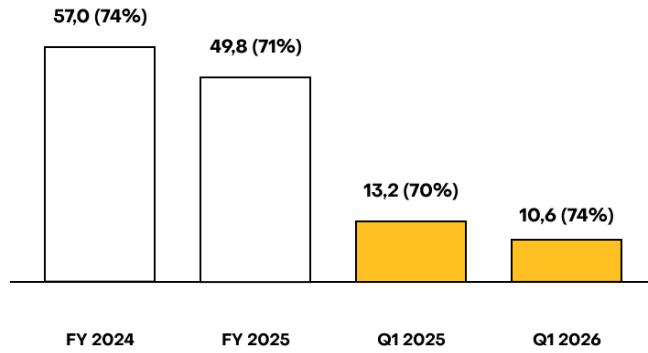
(MSEK)



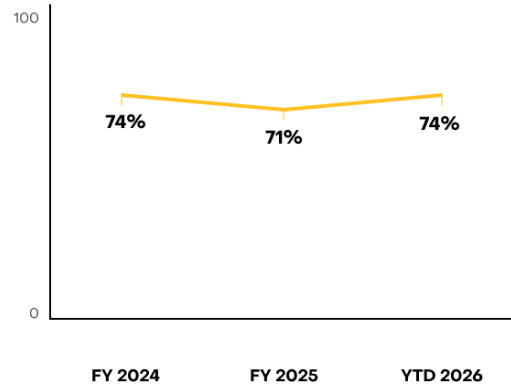
Summary of the period

Gross profit and margin

Gross profit
(MSEK)

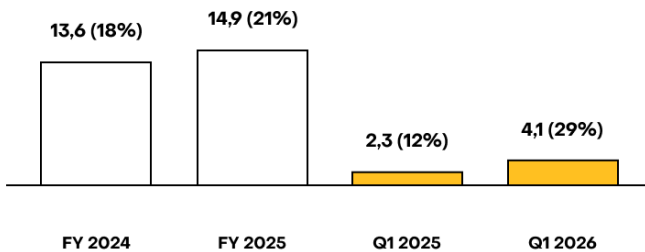


Gross margin

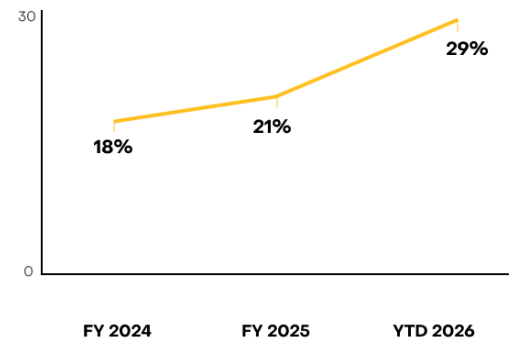


EBITDA

EBITDA
(MSEK)

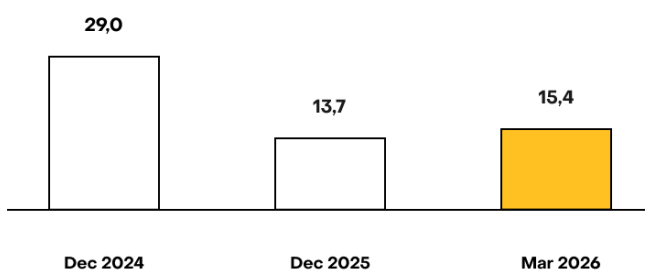


EBITDA margin

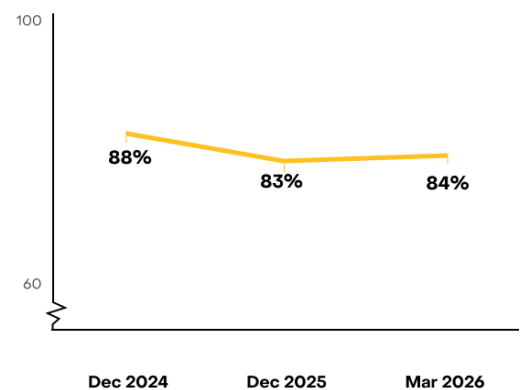


Cash and cash equivalents and Equity ratio

Cash and cash equivalents
(MSEK)



Equity ratio



Financial development

January – March 2026

Net revenue

Net revenue for the first quarter of 2026 amounted to KSEK 14,374 (18,826), representing a growth rate of -24 (-12)% compared to the previous year. At constant exchange rates relative to the comparison period, growth was -20 (-10)%. The decline was driven by negative development from existing customers, primarily within the Travel vertical. Compared to the fourth quarter of 2025, net revenue growth amounted to -7 (10)%, driven by weaker performance particularly within the iGaming vertical.

Operating costs

During the quarter, direct costs for products and services sold amounted to KSEK -3,763 (-5,651), where the decrease is driven by cost optimizations and lower revenue.

Other external costs amounted to KSEK -2,408 (-3,745). Personnel costs decreased to KSEK -8,894 (-11,580), driven by cost savings. Other operating expenses amounted to KSEK -922 (-1,334).

Depreciation and amortization of tangible and intangible assets amounted to KSEK -6,790 (-8,611) during the period. Amortization attributable to the application of IFRS 16 amounted to KSEK 0 (-689).

Tax

The income tax of the Group for the period amounted to KSEK 0 (165). The group's tax loss carry-forwards are not capitalized on the balance sheet.

Result of the period

Gross profit for the period amounted to KSEK 10,611 (13,175) with a margin of 74 (70)%. Operating profit before depreciation and amortization (EBITDA) amounted to KSEK 4,141 (2,316), representing a margin of 29 (12)%. The improved EBITDA margin was primarily driven by lower operational costs. Operating profit amounted to KSEK -2,649 (-6,295) and the net result amounted to KSEK -2,724 (-6,238).

Figures in parentheses refer to the corresponding period last year for profit/loss items and year-end 2024 for balance sheet items, unless otherwise stated.

Financial position

Cash flow

Cash flow from operating activities during the first quarter amounted to KSEK 7,475 (4,145). After investments, cash flow amounted to KSEK 2,616 (-954).

Intangible assets

Checkin.com has intangible assets valued at KSEK 48,940 (50,681), of which KSEK 47,698 (49,389) consists of capitalized development expenditures.

Investments in intangible assets during the first quarter amounted to KSEK -4,859 (-5,158). The period's investment was fully related to capitalized development costs for new functionality in the Group's software.

Other intangible assets amounted to KSEK 1,242 (1,292) and primarily consist of domains.

Cash and cash equivalents

Cash and cash equivalents as of March 31, 2026, amounted to KSEK 15,383 (13,675). Net cash, after deduction of interest-bearing liabilities, amounted to KSEK 12,449 (9,765).

Equity ratio

As per March 31, 2026, total equity for the group amounted to KSEK 62,788 (64,961). Equity ratio for the group amounted to 84 (83)%.

Employees

At the end of the period, total number of employees, including consultants, was 35 (35) people, of which 16 (19) were employed by the group.

Stock option program

The Group has outstanding incentive programs for selected key personnel and board members. As of March 31, 2026, there were 882,963 outstanding options, which in total entitle the holders to subscribe for 1,182,948 shares. This corresponds to a maximum dilution of 4%.

Customers

During the quarter, the group had 87 revenue generating customers. iGaming was the largest vertical, accounting for 65% of net revenue, followed by Travel & Leisure (13%), Financial Services (12%), and Other (10%). The group's five largest customers accounted for a total of 46% of net revenue during the quarter.

Significant events during the quarter

No significant events identified.

Significant events after the quarter

The company's new CEO, Arif Rehman, commenced his employment on April 27, 2026, in accordance with the press release issued when the recruitment was announced on December 11, 2025.

Figures in parentheses refer to the corresponding period last year for profit/loss items and year-end 2024 for balance sheet items, unless otherwise stated.

Consolidated statement of comprehensive income

Amount in KSEK	Jan - Mar		Full year
	2026	2025	2025
OPERATING INCOME			
Net revenue	14 374	18 826	69 871
Other operating income	895	642	2 370
Capitalized work for own account	4 859	5 158	20 001
Total operating income	20 127	24 625	92 242
OPERATING COSTS			
Direct costs	-3 763	-5 651	-20 107
Other external costs	-2 408	-3 745	-13 404
Personnel costs	-8 894	-11 580	-40 706
Depreciation and write-down	-6 790	-8 611	-146 484
Other operating costs	-922	-1 334	-3 093
Total operating costs	-22 776	-30 920	-223 794
Operating profit	-2 649	-6 295	-131 552
PROFIT AFTER FINANCIAL ITEMS			
Financial income	5	62	65
Financial costs	-80	-170	-519
Profit after financial items	-2 724	-6 403	-132 006
Income tax	-	165	2 320
NET RESULT	-2 724	-6 238	-129 686
Other comprehensive income			
<i>Items that may be classified to profit or loss</i>			
Translation differences of foreign operations	435	-8 869	-6 844
Other comprehensive income for the period	435	-8 869	-6 844
Total comprehensive income for the period	-2 289	-15 108	-136 530
Total comprehensive income for the period is attributable in its entirety to the parent company's shareholders			
Earnings per share, before dilution, SEK	-0.09	-0.21	-4.34
Earnings per share, after dilution, SEK	-0.09	-0.21	-4.34

Consolidated statement of financial position

Amount in KSEK	31 Mar		31 Dec
	2026	2025	2025
ASSETS			
Non-current assets			
Capitalized development costs	47 698	54 569	49 389
Goodwill	-	104 514	-
Other intangible assets	1 242	12 033	1 292
Right-of-use assets	-	598	-
Inventory	139	303	175
Other financial receivables	-	-	-
Total non-current assets	49 079	172 016	50 856
Current assets			
Trade receivables	8 411	11 422	11 328
Other receivables	1 254	705	1 180
Prepaid expenses and accrued income	775	2 505	1 457
Cash and cash equivalents	15 383	24 461	13 675
Total current assets	25 823	39 092	27 640
TOTAL ASSETS	74 902	211 108	78 496
EQUITY AND LIABILITIES			
Equity			
Share capital	747	747	747
Other paid-in capital	222 488	222 488	222 488
Translation reserves	8 781	6 321	8 346
Retained earnings, including profit for the period	-169 229	-43 626	-166 621
Total equity attributable for the owners of the parent company	62 788	185 930	64 961
Non-current liabilities			
Long term interest bearing liabilities	-	2 933	-
Long term lease liability	-	-	-
Deferred tax liability	1 100	3 216	1 100
Total non-current liabilities	1 100	6 149	1 100
Current liabilities			
Short term interest bearing liabilities	2 934	4 226	3 910
Short term lease liability	-	626	-
Trade payables	3 626	8 719	3 893
Tax liabilities	-	-343	-
Other liabilities	1 602	712	541
Accrued expenses and prepaid income	2 851	5 087	4 091
Total current liabilities	11 014	19 028	12 435
Total liabilities	12 114	25 177	13 535
TOTAL EQUITY AND LIABILITIES	74 902	211 108	78 496

Consolidated statement of changes in equity

Amount in KSEK	Attributable to the owners of the parent company				
	Share capital	Other paid-in capital	Translation reserves	Retained earnings incl. profit for the period	Total equity
2025					
Opening balance 1 Jan 2025	747	222 488	15 190	-37 524	200 902
Profit for the period	-	-	-	-129 686	-129 686
Other comprehensive income	-	-	-6 844	-	-6 844
Total comprehensive income	-	-	-6 844	-129 685	-136 530
Transactions with shareholders					
Share-based compensation	-	-	-	435	435
Issue of shares	-	-	-	-	-
Issue of warrants	-	-	-	153	153
Total transactions with shareholders	-	-	-	588	588
CLOSING BALANCE 31 DEC 2025	747	222 488	8 346	-166 621	64 961
2026					
Opening balance 1 Jan 2026	747	222 488	8 346	-166 621	64 961
Profit for the period	-	-	-	-2 724	-2 724
Other comprehensive income	-	-	435	-	435
Total comprehensive income	-	-	435	-2 724	-2 289
Transactions with shareholders					
Share-based compensation	-	-	-	116	116
Issue of shares	-	-	-	-	-
Issue of warrants	-	-	-	-	-
Total transactions with shareholders	-	-	-	116	116
CLOSING BALANCE 31 MAR 2026	747	222 488	8 781	-169 229	62 788

Consolidated statement of cash flow

Amount in KSEK	Jan - Mar		Full year
	2026	2025	2025
OPERATING ACTIVITIES			
Operating profit	-2 649	-6 295	-131 552
Financial items	-76	-108	-453
Reversal of depreciation	6 790	8 611	146 484
Other items not included in the cash flow	162	1 073	1 653
Cash flow from operating activities before changes in working capital	4 227	3 281	16 132
Cash flow from changes in working capital			
Increase/decrease in operating assets	3 893	1 337	2 126
Increase/decrease in operating liabilities	-646	-472	-6 497
Change in working capital	3 247	864	-4 370
Cash flow from operating activities	7 475	4 145	11 762
INVESTING ACTIVITIES			
Investments in intangible assets	-4 859	-5 158	-20 001
Investments in tangible assets	-	-2	-
Acquisition of subsidiaries	-	-	-
Deposits	-	61	61
Cash flow from investing activities	-4 859	-5 099	-19 940
FINANCING ACTIVITIES			
New share issue	-	-	-
Issue of warrants	-	-	153
New loans	-	-	-
Amortization of loans	-1 000	-1 879	-5 375
Cash flow from financing activities	-1 000	-1 879	-5 222
CASH FLOW FOR THE PERIOD			
Cash and cash equivalents at beginning of period	13 675	28 966	28 966
Exchange rate difference in cash and cash equivalents	93	-1 672	-1 891
Cash and cash equivalents, end of period	15 383	24 461	13 675

Income statement for the parent company

Amount in KSEK	Jan - Mar		Full year
	2026	2025	2025
OPERATING INCOME			
Net revenue	2 197	2 425	10 034
Other operating income	111	434	560
Capitalized work for own account	-	-	-
Total operating income	2 308	2 859	10 594
OPERATING EXPENSES			
Direct costs	-358	-544	-1 795
Other external costs	-767	-1 301	-4 597
Personnel costs	-2 301	-2 847	-10 934
Depreciation and write-downs	-	-	-
Other operating costs	-73	-135	-360
Total operating costs	-3 499	-4 827	-17 686
Operating profit	-1 192	-1 967	-7 092
PROFIT AFTER FINANCIAL ITEMS			
Financial income	2	34	40
Financial costs	-80	-161	-507
Impairment of non-current financial assets	-	-	-118 524
Profit after financial items	-1 270	-2 094	-126 083
Group contribution	-	-	-
Profit before taxes	-1 270	-2 094	-126 083
Income tax	-	-	-
NET RESULT	-1 270	-2 094	-126 083

Balance sheet for the parent company

Amount in KSEK	31 Mar		31 Dec
	2026	2025	2025
ASSETS			
Non-current assets			
Capitalized development costs	-	-	-
Other intangible assets	-	-	-
Inventory	-	-	-
Shares in subsidiaries	125	118 649	125
Other non-current assets	-	-	-
Total non-current assets	125	118 649	125
Current assets			
Trade receivables	-	-	-
Trade receivables group companies	17 404	25 955	20 559
Other receivables	542	-	462
Prepaid expenses and accrued income	211	552	262
Cash and cash equivalents	561	5 473	1 036
Total current assets	18 718	31 980	22 320
TOTAL ASSETS	18 843	150 629	22 445

EQUITY AND LIABILITIES			
Equity			
Share capital	747	747	747
Fund for development costs	-	-	-
Share premium fund	222 488	222 488	222 488
Retained earnings	-208 337	-82 457	-82 266
Profit for the period	-1 270	-2 094	-126 083
Total equity	13 628	138 684	14 886
Non-current liabilities			
Debt to credit institutions	-	2 933	-
Total non-current liabilities	-	2 933	-
Current liabilities			
Debt to credit institutions	2 934	4 226	3 910
Trade payables	1 047	2 452	1 620
Liabilities group companies	-	-	541
Tax liabilities	-	-433	-
Other liabilities	1 124	268	134
Accrued expenses and prepaid income	110	2 498	1 355
Total current liabilities	5 215	9 011	7 559
Total liabilities	5 215	11 945	7 559
TOTAL EQUITY AND LIABILITIES	18 843	150 629	22 445

Additional information

Auditor

Checkin.com Group's auditor is Ludvig Kollberg, certified auditor at Moore KLN AB. This report has not been subject to review.

Certified Adviser

Checkin.com Group shares are listed on Nasdaq First North since May 20, 2021. Companies listed on Nasdaq First North are required to have a Certified Adviser which is, among other things, responsible for supervision and compliance. Checkin.com Group's Certified Adviser is DNB Carnegie Investment Bank AB.

Forward-looking statements

This report contains forward-looking statements. Such statements are subject to risks and uncertainties. Actual developments may differ materially from the expectations expressed, due to various factors, many of which are beyond the control of Checkin.com Group.

Number of shares

The Group has one share class and each share corresponds to one vote at the General Meeting. At the end of the period, total number of shares before dilution, amounted to 29,886,425. Adjusted for dilution, using the treasury method, the number of shares amounted to 29,886,425.

Parent Company

Checkin.com Group AB is the parent company of the group, which on March 31, 2026 consisted of two wholly owned operating subsidiaries; the Swedish company Checkin.com International AB and the Estonian company GetID OÜ. The formerly wholly owned subsidiaries World OÜ and Datacorp OÜ were merged with GetID OÜ as of January 1, 2025.

Risks and uncertainties

Checkin.com Group AB is exposed to risks, particularly the dependence on key persons, the ability to manage growth and retain customers, plus the exposure to currency fluctuations. A more detailed risk analysis is presented in Checkin.com's latest published Annual Report.

Transactions with related parties

No transactions between the Group and its related parties significantly affected the Group's financial position or earnings during the period.

Presentation of the report

This report was submitted for publication on May 6, 11:30 CEST. At the same time, the report is made available on Checkin.com's website. On the same day, Checkin.com will present the interim report for investors, analysts and media via a webcasted telephone conference, at 16:30 CEST.

This report has been made in a Swedish and English version. In the event of any discrepancies between the Swedish and English version, the Swedish version shall prevail.

Definitions

Rounding off

Since amounts have been rounded off in KSEK, the tables do not always add up.

Number of shares, after dilution

Average number of shares during the period, adjusted for dilution from issued options where both share price and strike price are taken into account.

Gross profit

Net revenue minus direct costs.

Gross margin

Gross profit as a percentage of net revenue.

Direct costs

Costs driven by increased volumes. This includes for example costs for cloud infrastructure and third party services.

EBITDA

Earnings before interest, taxes, depreciation and amortization.

EBITDA margin

EBITDA as a percentage of net revenues.

Cashflow after investments

Cashflow from operating and investing activities, excluding acquisitions and disposals of subsidiaries.

Net cash/debt

Cash and bank balances minus interest bearing liabilities.

Net revenue growth, organic

Net revenue compared to the same period last year, for all entities now part of the group.

Net revenue growth, per share

Net revenue divided by the average number of shares during the period, compared to the same period previous year.

Net revenue LTM

Net revenue during the last twelve months.

Net revenue retention (NRR)

Net revenue during the quarter minus net revenue from new customers in the quarter, divided by net revenue during the previous quarter.

Net revenue retention LTM

Average NRR over the last four quarters raised to four.

Equity ratio

Total equity in relation to total assets.

Notes

Note 1 Accounting principles

Checkin.com AB follows the International Financial Reporting Standards (IFRS) and interpretations (IFRIC), as adopted by the EU. This interim report has been prepared according to IAS 34 Interim Financial Reporting and the Swedish Annual Accounts Act.

The interim report for the Parent Company has been prepared in accordance with Chapter 9 Interim Reports of the Swedish Annual Accounts Act. The Parent Company applies the Swedish Annual Accounts Act and RFR2 Accounting principles for legal entities. Under RFR2 the parent company of a legal entity applies all EU approved IFRS principles and interpretations within the framework defined by the Swedish Annual Accounts Act and taking into consideration the connection between accounting and taxation. The accounting principles applied are consistent with those described in Checkin.com's Annual Report for 2025.

Note 2 Currency exchange rates used in group consolidation

Januari – March

	Average rate		Rate at end-of-period	
	2026	2025	2026	2025
Euro (EUR)	10.6931	11.2312	10.9430	10.8490

The Board of Directors' assurance

The Board of Directors and the CEO confirm that this report provides a fair overview of the company's operations, position and results.

Stockholm, May 6, 2026

Johan Qviberg

Chairman of the Board

Arif Rehman

CEO

Carl Holmquist

Board member

Alexey Kuznetsov

Board member

Tobias Lindh

Board member

Emanuel Stihl

Board member

Checkin.com in short

Checkin.com Group, founded in 2017, specializes in creating secure digital environments by helping businesses establish who is on the other side of the screen. The company's advanced KYC solutions streamline user registration, identification and login processes while also ensuring that their customers meet strict regulatory standards. This is achieved through a variety of advanced technologies that in real time verify user identities, assess ages, and scan official documents with high accuracy. The software also features biometric technologies to provide an extra layer of fraud prevention while enabling seamless experiences for end-users.

By offering a smooth and secure experience for users and flexibility and customer-focus for partners, the software drives both user trust and business growth. Since the foundation of the Company, the software platform has handled millions of checkin sessions from more than 170 countries.

Checkin.com Group currently targets primarily three main customer verticals, iGaming, Financial services and Travel & Leisure. The market for each vertical is growing, and Checkin.com sees great potential to grow together with their customers. The Group assesses that the global market for checkins is major, fragmented and unsaturated and the Group sees great opportunity for growth in additional verticals.

During 2021 Checkin.com Group acquired the rapidly growing Estonian tech company GetID and another Estonian technology company, DataCorp, with closing in January 2022. The Group is headquartered in Stockholm, Sweden, but operates and recruits globally to attract world-leading talent.

Checkin.com Group's share is since May 2021 listed on Nasdaq First North Growth Market under the trading symbol "CHECK". For more information about the company visit: <https://group.checkin.com/investors/>

Vision and business idea

Checkin.com's vision is to change how end-users interact and identify themselves with products and brands online across the world. The business idea is to help the Group's customers grow faster by providing individually adapted KYC solutions that enable user friendly and regulatory compliant user verifications.

Business model

The group's product is delivered through a cloud-based software, Software as a Service, where customers mainly sign monthly subscriptions. Checkin.com offers different monthly packages at fixed prices, based on size and ancillary services. The subscription-based business model also includes a variable component for use beyond what is included in any monthly packages.

Upcoming reports and events

Interim report quarter 2 2026:	20 Aug 2026
Interim report quarter 3 2026:	5 Nov 2026
Year-end report 2026:	11 Feb 2027

Contact

Investor Relations
ir@checkin.com