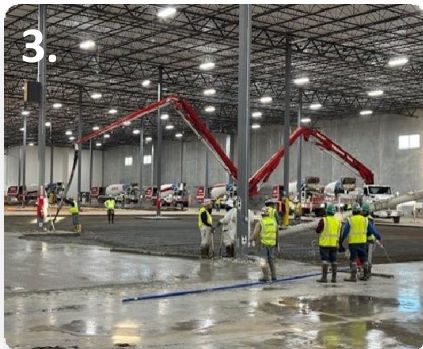
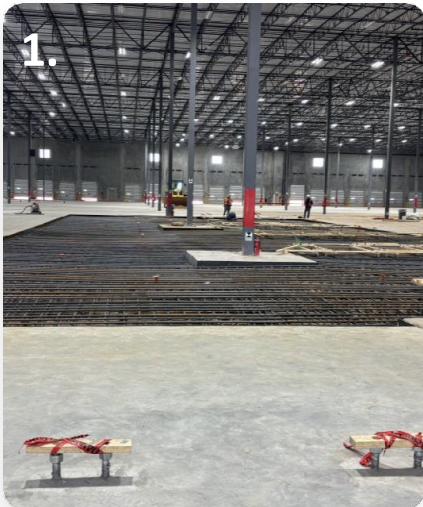




Houston Circularity Center Update – April 2025



Completed civil and structural work

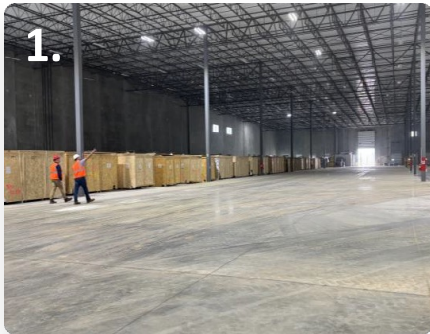
Construction personnel prioritize safety in operations

The development of the first Cyclyx Circularity Center is well underway, with all major civil and structural work completed in March. Cyclyx is continuing to pre-build inventory in advance of the Center's opening and feedstock sourcing is ahead of schedule with the Q1 pre-build inventory target exceeded by 20%.

Located in the Houston Tradeport, the Center is one of the largest facilities at over 520,000 square feet, compared to the average MRF at 70,000 square feet.* After full commissioning, it will produce 300 million pounds (150,000 metric tons) of post-use plastics annually—the only facility at scale that will be able to process post-use plastics for multiple recycling applications.

1. Rebar is delivered and laid down in the excavated areas. This will strengthen the slab in support of the heavier mechanical equipment, such as optical sorters and pelletizers.
2. Concrete mixing trucks enter through the bay doors to deliver their payload to the pump trucks.
3. The pump trucks utilize their flex arms to deliver concrete to specified areas.
4. Foundation prep is completed for the pellet load-out building. The loaded trucks will deliver the pellets to advanced recycling off-takers.

*Source: [Resource Recycling](#)



Equipment staged for installation

Key equipment on site and assembly to begin shortly

A first-of-its kind facility, the Circularity Center is uniquely able to source and process a variety of post-consumer, commercial, and industrial plastic waste previously destined for landfills. Within the facility, various kinds of equipment will be utilized—including optical sorters, shredders, balers, and pelletizers—alongside the Company's proprietary technology. Together, this technology allows Cyclyx to sort and blend custom formulations that meet customers' unique specifications for various plastic feedstocks.

The Center will include a dedicated laboratory modeled after the Cyclyx Circularity Laboratory located in Portsmouth, NH, and with a focus on quality control and assurance to ensure our products consistently meet customer requirements.

1. In Q1 2025, CEO Chris Yandell visited the Center to observe progress and meet the on-site team.
2. Parts of the sortation system are staged for installation.
3. A large forklift helps to organize heavy machinery and other construction materials.
4. Conveyers lining the length of the North wall.
5. A baler that will compress and package sorted plastics and other materials.
6. Electrical transformers are stationed outside prior to installation.