

INTERIM REPORT JANUARY – SEPTEMBER 2009

Key ratios	9 mths Jan-Sept		3 mths July-Sept		Full year
	2009	2008	2009	2008	2008
Net sales, total (SEK M)	439.4	410.5	137.9	132.5	579.3
Profit from holdings (SEK M)	42.3	41.6	12.5	14.6	54.7
Operating profit, total (SEK M)	26.1	29.8	6.5	10.6	31.7
Operating margin, total (%)	6	7	5	8	5
Profit after tax (SEK M)	23.6	31.2	5.2	12.6	31.6
Earnings per share (SEK)	2.14	2.81	0.47	1.14	2.85
Equity per share (SEK)	55.50	53.92	55.50	53.92	54.00
Cash flow from operating activities (SEK M)	30.6	24.2	6.5	14.0	22.5

- The Group reported organic growth of 7% for the period. Net sales in continuing operations rose by 9% during the period and amounted to SEK 439.4m (401.7), of which 137.9m (132.5) referred to the third quarter.
- The period's profit from holdings increased over the previous year thanks to positive development in Deltaco and IAR Systems. Profit from holdings for the third quarter decreased as a result of negative development in Northern.
- Third quarter sales in Northern were affected by declining sales in Europe. The major investments in the build-up of a European sales organization have not yielded the desired short-term effects. Northern's establishment in Europe will be changed during the fourth quarter.
- Net cash for the period improved by SEK 30m and the financial position remains strong, with an equity/assets ratio of 80% (78) and equity per share of SEK 55.50 (53.92).

Deltaco and IAR Systems, the Group's two largest holdings, both showed favorable development. Deltaco has continued to deliver impressive performance, with high and stable profitability in a fiercely competitive market.

IAR Systems is now showing the effects of the changes made in the past year. The company has by far the largest customer base for development tools in the market for embedded systems and I am convinced that IAR Systems has the products and expertise necessary to realize its potential.

Stefan Skarin, President and CEO of INTO.I

Summary income statements	9 mths Jan-Sept		3 mths July-Sept		Full year
SEK M	2009	2008	2009	2008	2008
Net sales, total	439.4	410.5	137.9	132.5	579.3
Operating expenses	-393.5	-364.9	-124.3	-116.3	-519.5
Depreciation of tangible assets	-3.6	-4.0	-1.1	-1.6	-5.1
Profit from holdings	42.3	41.6	12.5	14.6	54.7
Central costs, net	-12.0	-8.0	-4.6	-2.7	-17.9
Amortization of intangible assets	-4.2	-3.8	-1.4	-1.3	-5.1
Operating profit, total	26.1	29.8	6.5	10.6	31.7
Net financial items	-2.5	-1.2	-1.3	-0.6	-2.2
Profit before tax	23.6	28.6	5.2	10.0	29.5
Income tax	0.0	2.6	0.0	2.6	2.1
Profit for the period	23.6	31.2	5.2	12.6	31.6
<i>Operating margin, %</i>	6	7	5	8	5
<i>Earnings per share, SEK</i>	2.14	2.81	0.47	1.14	2.85

- Net sales in continuing operations rose by 9%, from SEK 401.7m to SEK 439.4m.
- Profit from holdings increased from SEK 41.6m to SEK 42.3m.
- Central costs include items attributable to Deltaco's former operating property.
- At the end of the quarter the Parent Company's controller took over as financial manager of Northern, which will result in better financial administration in Northern and lower central costs.
- Net financial items totaled SEK -2.5m (-1.2). The decrease is attributable to Deltaco's investment in an operating property during the second quarter of 2008 and foreign exchange effects in the third quarter of 2009.
- No tax is expected to be payable in 2009 due to the Group's cumulative loss carryforwards. In the prior year, the Group reported a tax asset of SEK 2.6m following a review decision on the 2006 tax assessment.

Balance sheets, SEK M	Sept 30, 2009	Sept 30, 2008	Dec 31, 2008
Intangible assets	336.5	346.7	337.4
Tangible assets	79.3	83.7	83.0
Financial assets	105.4	106.6	115.1
Other current assets	195.6	190.7	189.7
Cash and cash equivalents	47.5	41.0	32.3
Equity	613.3	596.0	596.7
Interest-bearing liabilities	56.1	77.1	70.7
Interest-free liabilities	94.9	95.6	90.1
Total assets	764.3	768.7	757.5
<i>Equity per share, SEK</i>	55.50	53.92	54.00

- Goodwill is reported at SEK 304.5m (313.5)
- Cumulative loss carryforwards amounted to approximately SEK 381m. The capitalized value in the balance sheet was SEK 87.3m.
- Interest-bearing liabilities totaled SEK 56.1m, of which SEK 42.3m is attributable to financing of operating properties in Deltaco.
- The equity/assets ratio at September 30, 2009, was 80% (78).
- Equity per share was SEK 55.50 (53.92).

	9 mths Jan-Sept		3 mths July-Sept		Full year
Cash flows, SEK M	2009	2008	2009	2008	2008
Operating activities	30.6	24.2	6.5	14.0	22.5
Investing activities	5.4	-49.6	8.1	-3.1	-52.9
Financing activities	-20.8	27.2	-3.3	5.4	23.5
Cash flow for the period	15.2	1.8	11.3	16.3	-6.9

- Net cash improved by SEK 29.8m during the period, from SEK -38.4m at year-end 2008 to SEK -8.6m at September 30, 2009.
- Cash flow from operating activities increased by SEK 6.4m during the period.
- The period's cash flow from investing activities was positive since the purchase price for the sale of Network Innovation in September 2007 has now been paid in full.
- The cash flow refers to amortization of interest-bearing liabilities of SEK 14.2m and stockholder dividends of SEK 6.6m.

Discontinued operations are included in the above tables until the date of sale.

Overview of holdings JANUARY–SEPTEMBER

2009

HOLDINGS SEK M	Net sales					Operating profit				
	Q1-3	Q1-3	Q3	Q3	Full year	Q1-3	Q1-3	Q3	Q3	Full year
	2009	2008	2009	2008	2008	2009	2008	2009	2008	2008
IAR Systems	127.5	116.6	41.4	37.4	160.5	12.7	9.7	6.7	4.6	13.0
Northern	29.6	22.1	5.3	6.2	33.1	2.9	5.3	-2.4	1.7	6.8
Deltaco	250.6	234.0	83.9	77.2	335.0	23.4	20.3	7.3	6.5	26.3
Nocom Software	31.7	29.0	7.3	9.2	41.9	3.3	6.9	0.9	2.3	9.2
Subtotal	439.4	401.7	137.9	130.0	570.5	42.3	42.2	12.5	15.1	55.3
Divested holdings	-	8.8	-	2.5	8.8	-	-0.6	-	-0.5	-0.6
Total Group	439.4	410.5	137.9	132.5	579.3	42.3	41.6	12.5	14.6	54.7

IAR Systems – Software and development tools for programming of microprocessors in embedded systems

- Stefan Skarin has been appointed permanent President of IAR Systems AB in order to streamline and optimize these operations.
- The measures taken since April 2009 have started to have visible effect.
- The improvement in earnings for the third quarter reflects an increase in sales compared to the previous year.

Northern – Software for Storage Resource Management

- Northern's sales are tangibly affected by the outcome of major contracts that have a longer sales cycle, which can lead to significant differences between quarters.
- Net sales for the third quarter were impacted by lower sales in Europe and the delayed effects of major investments to build up a European sales organization.
- Northern's establishment in Europe will be change in the fourth quarter (see also under "Subsequent events").

Deltaco – Supplier and distributor of computer accessories

- Net sales increased by 5% compared to the same period of last year.
- Operating profit and operating margin improved over the previous year thanks to a well positioned offering.
- The move to a new industrial property has resulted in higher efficiency.
- Sales of own-branded products accounted for 29% of total sales during the period.

Nocom Software – Distribution of computer software

- Gross margin for the period declined as a consequence of a weaker market situation that also led to a changed product mix.

A clear focus

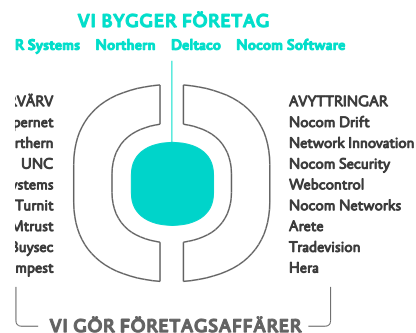
Intoi's business mission consists of acquisition, active ownership and divestment of IT companies – of which active ownership is the central component. Intoi should be seen and evaluated as a single unit, with a focus on the whole.

Active ownership – we build companies

Active ownership is the foundation for long-term profitability, which is the Group's foremost objective. As a result, profitability is continuously in focus as we build and develop our holdings. Active ownership is Intoi's core business – an ongoing process in close cooperation with the companies in the Group. The aim is to build and develop the companies through a commitment to, participation in and support of their operations.

Divested holdings

Nocom Drift AB was sold on October 1, 2008, and is included in the above table until this date. For the first nine months of 2008 Nocom Drift had net sales of SEK 8.8m and an operating profit of SEK -0.6m.



Financial information

Cash flow, cash and cash equivalents

Cash flow from operating activities for the period was SEK 30.6m (24.2), of which SEK 6.5m (14.0) arose in the third quarter. Cash flow from investing activities for the period totaled SEK 5.4m (-49.6), of which SEK 8.1m (-3.1) refers to the third quarter.

The period's cash flow from financing activities was SEK -20.8m (27.2), of which SEK -3.3m (5.4) was generated in the third quarter. The cash flow refers to amortization of interest-bearing liabilities of SEK 14.2m and stockholder dividends of SEK 6.6m. At September 30, 2009, Intoi had net cash of SEK -8.6m (-36.1) in addition to its holding of 634,600 treasury shares.

Cash and cash equivalents at the end of the period totaled SEK 47.5m (41.0) and unutilized bank overdraft facilities amounted to SEK 47.3m (21.7). The Group's total available cash and cash equivalents thus amounted to SEK 94.8m (62.7).

Goodwill

Goodwill represents the excess of the cost of acquisition over the fair value of the Group's share in identifiable net assets of the acquired subsidiary on the acquisition date. Goodwill is tested for impairment yearly and is measured at cost less accumulated impairment losses. Goodwill at September 30, 2009, was SEK 304.5m.

Deferred tax asset

The deferred tax asset attributable to loss carryforwards is recognized only to the extent that it is probable that the loss carryforwards can be utilized against future taxable profits. At September 30, 2009, the Group had cumulative loss carryforwards of around SEK 381m. In the balance sheet, the current estimated value of these losses is SEK 87.3m (85.1). This item consists of the assessed value of loss carryforwards.

Investments and financing

Net expenditure on property, plant and equipment for the period was SEK -0.1m (50.9). The equity/assets ratio at September 30, 2009, was 80% (78). Pledged assets decreased by SEK 0.7m during the period and amounted to SEK 120.6m (123.5) at the end of September. No changes in the reported contingent liabilities took place.

Personal

The number of employees in continuing operations at the end of the period was 242 (241). The average number of employees during the period January – September 2009 was 242, of which IAR Systems accounted for 125, Northern for 34, Deltaco for 69, Nocom Software for 10 and Central for 4.

Parent Company

The operations of the Parent Company consist of group management and PR/IR functions. The Parent Company's net

sales, all of which are intra-group, amounted to SEK 11.6m (9.1) for the first nine months of the year. Profit after financial items was SEK -3.5m (-5.2).

Central reported an operating profit of SEK -12.6m (-8.0) for the period. Net expenditure on property, plant and equipment was SEK -0.2m (0.0). Cash and cash equivalents at September 30, 2009, amounted to SEK 0.3m (0.0) and unutilized overdraft facilities totaled SEK 37.3m (11.7). The Parent Company's available cash and cash equivalents thus amounted to SEK 37.6m (11.7). The number of employees in the Parent Company at the end of the period was 3 (3).

At the end of the quarter, the Parent Company's controller took over as financial manager of Northern, which will result in better financial administration in Northern and lower central costs.

Accounting policies

This consolidated interim report has been prepared in accordance with IAS 34, Interim Financial Reporting. The accounts of the Parent Company are presented in accordance with the Annual Accounts Act and the Swedish Financial Reporting Board's recommendation RFR 2.2, Accounting for Legal Entities. The consolidated accounts are presented in accordance with the accounting standards endorsed by the European Commission for application in the EU. With effect from January 1, 2009, the Group applies the revised IAS 1, Presentation of Financial Statements. The change has affected Intoi's reporting retrospectively and means that income and expenses that were previously recognized directly in equity are now presented in a separate report directly following the income statement. Aside from this change of standard, the accounting policies are the same as those applied in the most recent annual report.

The Intoi share

Intoi's class B share is quoted on the Small Cap list of the NASDAQ OMX Nordic Exchange Stockholm. During the period, the share price varied from a low of SEK 14.40 (20.30) to a high of SEK 28.70 (41.70). The share price at September 30, 2009, was SEK 26.70 (20.30). Intoi's market capitalization on the same date was SEK 295m (224).

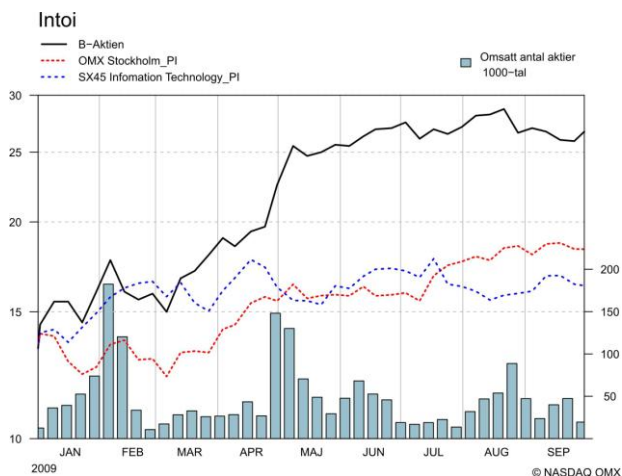
The number of stockholders in Intoi at September 30, 2009, was 11,617 (12,471), of whom 682 (706) held more than 1,000 shares each. Foreign stockholders held approximately 19% (23) of the share capital and 25% (28) of the votes.

Intoi repurchased no shares during the period. However, a total of 634,600 class B shares for total value of SEK 30.1m were repurchased on September 30, 2009. These shares are not included in the share data at September 30, 2009.

Intoi's share capital at September 30, 2009, amounted to SEK 116,885,614, divided between 11,688,561 shares of which 100,000 are of class A and 11,588,561 are of class B. A Following the repurchase, 634,600 of these class B shares are

held in treasury by Intoi. This means that the number of class B shares on the market at September 30, 2009, was 10,953,961.

Share price trend, January – September 2009



2009 Annual General Meeting

The AGM on May 5, 2009, re-elected Board members Trygve Angell, Björn Abild, Lisbeth Gustafsson and Stefan Skarin. The AGM appointed Trygve Angell as Board Chairman.

The AGM resolved to set up a Nominations Committee, whereby the Board Chairman shall call together the company's three largest stockholders in terms of voting power and each of these shall then have the right to appoint one member to the Nominations Committee. Furthermore, the Board Chairman can be appointed as a member of the Nominations Committee.

The AGM approved the proposed stockholder dividend of SEK 0.60 per share.

The Board was authorized to decide on the repurchase of shares whereby the holding of treasury shares may at no time exceed 10 percent of all registered shares in the company. The motive for the authorization is to give the Board greater freedom of action in optimizing the company's capital structure. The Board was also authorized to decide on the sale of treasury shares as consideration in the acquisition of companies or operation.

Nominations Committee

In accordance with the decision of the Annual General Meeting on May 5, 2009, the Nominations Committee is composed of Göran Espelund representing Lannebofonder, Ulf Strömsten representing Catella and Tedde Jeansson. Ulf Strömsten was appointed as chairman of the Nominations Committee. In his dual capacity as a major shareholder and CEO, Stefan Skarin has been co-opted to participate in meetings of the Nominations Committee.

Significant risks and uncertainties

Changes in the IT industry are often rapid, and future forecasts are therefore associated with a higher degree of uncertainty for a corporate group like Intoi. The risks Intoi is exposed to vary with respect to the activities of the different subsidiaries. Intoi's significant risks and uncertainties are described in the administration report section of the 2008 annual report under the heading "Business risks" on pages 17-18 and in Note 3 on pages 34-35. No essential changes have arisen since that time.

Subsequent events

Northern's establishment in Europe has been scaled down and its sales force has been reduced by half. In the future, Northern will focus on the areas with the largest customer base and potential.

Future outlook

In spite of the economic recession and widespread turbulence in the market, it is highly satisfying that the Group has succeeded in maintaining healthy growth, profitability and a stable financial position. The uncertainty that has permeated the market throughout the year has eased during the autumn. We are seeing signs of rising demand among our customers and a higher level of activity in corporate transactions. The Group will continue to focus on its core business in active ownership throughout the remainder of the year and it is our assessment that the Group will maintain its good profitability.

Stockholm, Wednesday, October 28, 2009

Stefan Skarin
President and CEO

Review report

This interim report has not been subject to special examination by the company's independent auditor.

Financial calendar 2010

Year-end report 2009, February 17, 2010
Interim report January-March 2010, April 28, 2010
Annual General Meeting, May 4, 2010
Interim report January-June 2010, August 25, 2010
Interim report January-September 2010, October 20, 2010

Intoi AB (publ)

Corporate identification number 556400-7200
Kista Science Tower, SE-164 51 Kista, Sweden
Tel. +46 8 410 920 00 www.intoi.se
Stefan Skarin, President and CEO, Tel +46 708 651005
Stefan Ström, COO, Tel +46 708 651068

INCOME STATEMENTS, GROUP		9 mths Jan-Sept		3 mths July-Sept		Full year
SEK M	2009	2008	2009	2008	2008	
Continuing operations						
Net sales	439.4	401.7	137.9	130.0		570.5
Operating expenses	-405.5	-364.4	-128.9	-116.3		-528.9
Depreciation of tangible assets	-3.6	-3.1	-1.1	-1.3		-4.2
Amortization of intangible assets	-4.2	-3.8	-1.4	-1.3		-5.1
Operating profit from continuing operations	26.1	30.4	6.5	11.1		32.3
Result from financial investments in continuing operations	-2.5	-1.2	-1.3	-0.6		-2.2
Profit after financial items from continuing operations	23.6	29.2	5.2	10.5		30.1
Discontinued operations						
Net sales	-	8.8	-	2.5		8.8
Operating expenses	-	-8.5	-	-2.7		-8.5
Depreciation of tangible assets	-	-0.9	-	-0.3		-0.9
Amortization of intangible assets	-	-	-	-		-
Operating profit from discontinued operations	-	-0.6	-	-0.5		-0.6
Result from financial investments in discontinued operations	-	0.0	-	0.0		0.0
Profit after financial items from discontinued operations	-	-0.6	-	-0.5		-0.6
Profit after financial items	23.6	28.6	5.2	10.0		29.5
Income tax	0.0	2.6	0.0	2.6		2.1
Profit for the period	23.6	31.2	5.2	12.6		31.6
<i>Earnings per share for the period, basic and diluted, SEK</i>	<i>2.14</i>	<i>2.81</i>	<i>0.47</i>	<i>1.14</i>		<i>2.85</i>

STATEMENT OF COMPREHENSIVE INCOME		9 mths Jan-Sept		3 mths July-Sept		Full year
SEK M	2009	2008	2009	2008	2008	
Profit for the period	23.6	31.2	5.2	12.6		31.6
Other comprehensive income						
Foreign exchange gains/losses	-0.4	0.5	-0.4	0.5		0.8
Total other comprehensive income	-0.4	0.0	-0.4	0.5		0.8
Comprehensive income for the period	23.2	31.7	4.8	13.1		32.4
<i>Comprehensive income for the period attributable to stockholders in the Parent Company</i>	<i>23.2</i>	<i>31.7</i>	<i>4.8</i>	<i>13.1</i>		<i>32.4</i>

CASH FLOWS, GROUP		9 mths Jan-Sept		3 mths July-Sept		Full year
SEK M	2009	2008	2009	2008	2008	
Incoming payments from customers	432.4	413.5	122.1	119.3		576.0
Outgoing payments to suppliers and employees	-398.3	-387.5	-114.5	-108.2		-553.6
Interest received	0.2	1.0	0.1	0.4		1.2
Interest paid	-2.7	-2.2	-1.4	-1.1		-3.5
Income tax paid	-1.0	-0.6	0.2	3.6		2.4
Cash flow from operating activities	30.6	24.2	6.5	14.0		22.5
Investments in property, plant and equipment	-2.4	-51.9	-1.0	-2.5		-54.8
Other	7.8	2.3	9.1	-0.6		1.9
Cash flow from investing activities	5.4	-49.6	8.1	-3.1		-52.9
Repurchase of shares	-	-6.3	-	-		-6.3
Dividends	-6.6	-22.1	-	-		-22.1
Change in financial liabilities	-14.2	55.6	-3.3	5.4		51.9
Cash flow from financing activities	-20.8	27.2	-3.3	5.4		23.5
Cash flow for the period	15.2	1.8	11.3	16.3		-6.9
Liquid assets at beginning of period	32.3	39.2	36.2	24.7		39.2
Liquid assets at end of period	47.5	41.0	47.5	41.0		32.3
Unutilized overdraft facilities	47.3	21.7	47.3	21.7		35.9
Total available cash and cash equivalents	94.8	62.7	94.8	62.7		68.2

As a complement to the income statement against the background of Intoi's more clearly defined operating focus, certain key ratios are also provided at the total level so that the reader can more easily monitor the Group's development.

BALANCE SHEETS, GROUP				
SEK M	Sept 30, 2009	Sept 30, 2008	Dec 31, 2008	
ASSETS				
Non-current assets				
Goodwill	304.5	313.5	304.5	
Other intangible assets	32.0	33.2	32.9	
Tangible assets	79.3	83.7	83.0	
Financial assets	105.4	106.6	115.1	
Total non-current assets	521.2	537.0	535.5	
Current assets				
Inventories	66.1	69.6	66.5	
Other current assets	39.1	43.5	39.8	
Trade receivables	90.4	77.6	83.4	
Cash and cash equivalents	47.5	41.0	32.3	
Total current assets	243.1	231.7	222.0	
TOTAL ASSETS	764.3	768.7	757.5	
EQUITY AND LIABILITIES				
Total equity	613.3	596.0	596.7	
Non-current liabilities				
Interest-bearing liabilities	38.4	43.5	41.2	
Provisions	7.7	8.7	8.6	
Total non-current liabilities	46.1	52.2	49.8	
Current liabilities				
Trade payables	23.3	25.3	17.0	
Interest-bearing liabilities	17.7	33.6	29.5	
Provisions	-	1.0	1.0	
Other current liabilities	63.9	60.6	63.5	
Total current liabilities	104.9	120.5	111.0	
TOTAL EQUITY AND LIABILITIES	764.3	768.7	757.5	
Pledged assets	120.6	123.5	121.3	
Contingent liabilities	-	-	-	

CHANGES IN EQUITY, GROUP					
SEK M	9 mths Jan-Sept		3 mths July-Sept		Full year
	2009	2008	2009	2008	2008
Equity at beginning of period	596.7	592.7	608.5	582.9	592.7
Repurchase of shares	-	-6.3	-	-	-6.3
Dividends	-6.6	-22.1	-	-	-22.1
Comprehensive income for the period	23.2	31.7	4.8	13.1	32.4
Equity at end of period	613.3	596.0	613.3	596.0	596.7

KEY RATIOS, GROUP					
	9 mths Jan-Sept		3 mths July-Sept		Full year
	2009	2008	2009	2008	2008
Gross margin, %	7.7	9.5	6.5	10.2	7.2
Operating margin, %	5.9	7.3	4.7	8.0	5.5
Profit margin, %	5.4	7.0	3.8	7.5	5.1
Cash flow, %	7.0	5.9	4.7	10.5	3.9
Equity/assets ratio, %	80.2	77.5			78.8
Return on equity, %	3.9	5.2	0.9	2.1	5.3
Return on capital employed, %	3.9	4.9	1.0	1.7	5.1
Interest coverage ratio, times	9.4	14.0	4.7	10.6	9.7
Capital employed (SEK M)	669.4	644.8			667.4
Net interest-bearing liabilities (SEK M)	8.6	36.1			38.4
Net debt/equity ratio, times	0.01	0.06			0.06
Number of employees at end of period	242	248			242
Average number of employees	242	231	242	237	233
Net sales per employee, SEK M	1.8	1.8	0.6	0.6	2.5

SHARE DATA	9 mths Jan-Sept		3 mths July-Sept		Full year
	2009	2008	2009	2008	2008
Equity per share, SEK	55.50	53.92			54.00
Number of shares at end of period, millions	11.05	11.05			11.05
Average number of shares, millions	11.05	11.09	11.05	11.05	11.08
Cash flow from operating activities per share (SEK)	2.77	2.18	0.59	1.27	2.03

GROUP	Total sales by quarter					Operating profit by quarter				
	SEK M	Q1	Q2	Q3	Q4	Full year	Q1	Q2	Q3	Q4
2007	203.3	175.1	161.2	154.2	693.8	12.0	9.8	9.6	9.1	40.5
2008	149.1	128.9	132.5	168.8	579.3	14.4	4.8	10.6	1.9	31.7
2009	168.5	133.0	137.9			14.4	5.2	6.5		
Earnings per share (SEK)				2.14	2.81	0.47	1.14			2.85

INCOME STATEMENTS, PARENT COMPANY	9 mths Jan-Sept		Full year
SEK M	2009	2008	2008
Net sales	11.6	9.1	13.5
Operating expenses	-14.0	-12.2	-13.3
Depreciation of tangible assets	-0.8	-0.4	-0.6
Operating profit/loss	-3.2	-3.5	-0.4
Result from financial investments	-0.3	-1.7	-2.5
Profit/loss after financial items	-3.5	-5.2	-2.9
Income tax	0.0	0.0	2.0
Profit/loss for the period	-3.5	-5.2	-0.9

BALANCE SHEETS, PARENT COMPANY	9 mths Jan-Sept		Full year
SEK M	2009	2008	2008
ASSETS			
Non-current assets			
Tangible assets	0.6	1.8	1.8
Shares in subsidiaries	414.3	414.4	414.4
Other financial assets	57.7	56.2	57.7
Total non-current assets	472.6	472.4	473.9
Current assets			
Receivables from subsidiaries	25.8	42.9	43.6
Other current assets	8.3	4.3	7.2
Cash and cash equivalents	0.3	0.0	0.0
Total current assets	34.4	47.2	50.8
TOTAL ASSETS	507.0	519.6	524.7
EQUITY AND LIABILITIES			
Total equity	489.5	490.4	500.0
Current liabilities			
Trade payables	1.7	0.6	0.5
Interest-bearing liabilities	14.4	24.6	20.9
Liabilities to subsidiaries	-	0.0	-
Provisions	-	1.0	1.0
Other current liabilities	1.4	3.0	2.3
Total current liabilities	17.5	29.2	24.7
TOTAL EQUITY AND LIABILITIES	507.0	519.6	524.7